

Department of Health and Human Services - Division of Public Health
 Women, Infant and Community Wellness Section

Covering Family Planning and Maternal Health Clinical Services

Regional Nurse Consultants

Temporary Coverage Map Effective 2/25/2022

Regional Nurse Consultant/Supervisor

Patty Kempton P.O. Box 611



Carthage, NC 28327
 Phone: 910-947-2464
 Cell: 919-218-1520
 Fax: 910-947-2660

patty.kempton@dhhs.nc.gov

Nurse Consultant

Laura Pless



202 South Griffin Street
 Elizabeth City, NC 27909
 Phone: 252-331-6773
 Cell: 828-767-1002

laura.pless@dhhs.nc.gov

Nurse Consultant

Vacant



Continue to contact Laura Pless at
 828.767.1002 or

laura.pless@dhhs.nc.gov

Statewide Family Planning Nurse Consultant

Elizabeth Draper 1929 Mail Service Center
 5601 Six Forks Rd/2nd Floor
 Raleigh, NC 27699-1929/27609
 Phone: 919-707-5719
 Cell: 919-397-6932
 Fax: 919-870-4827

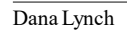
elizabeth.draper@dhhs.nc.gov

Statewide Maternal Health Nurse Consultant

Ebony Tate 1929 Mail Service Center
 5601 Six Forks Rd/2ndFloor
 Raleigh, NC 27699-1929/27609
 Phone: 919-707-5689
 Cell: 919-622-0313
 Fax: 919-870-4827

ebony.tate@dhhs.nc.gov

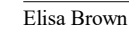
Nurse Consultant



Dana Lynch P.O. Box 1233
 Dallas, NC 28034
 Phone: 704-9220373
 Cell: 828-380-0833
 Fax: 704-922-0948

dana.lynch@dhhs.nc.gov

Nurse Consultant



Elisa Brown 205 Porter Hill Drive
 Youngsville, NC 27596
 Phone: 919-554-3931
 Cell: 919-418-1656
 Fax: 919-554-3933

elisa.brown@dhhs.nc.gov

