



Disclosures

- 1.25 NCPD contact hours and up to 1.25 CPH Recertification Credits may be earned upon successful completion.
- Participants must attend 100% of the educational activity and complete the online course evaluation.
- No relevant financial relationship exists for anyone in the position to control content for this activity.
- The Public Health Nursing Institute for Continuing Excellence is approved as a provider of nursing continuing professional development by the North Carolina Nurses Association, an accredited approver by the American Nurses Credentialing Center's Commission on Accreditation.
- This webinar will be recorded. The recording will be available for completion until February 18, 2024.

1





Breastfeeding Coordination Team
 Division of Public Health
 Division of Child and Family Well-Being
 North Carolina Department of Health & Human Services

Inclusive Lactation Support for LGBTQ+ Families

Lily Robin Stevens, MPH
Maternal Health Innovation Program Coordinator

Erin Hoffman, MS, RDN, LDN
Nutrition Consultant

Diane Beth, MS, RDN, LDN
Nutrition Consultant

August 18, 2022

2

Learning Objectives

By the end of this presentation, participants will:

- Examine their own biases about breastfeeding
- Understand the importance of inclusive language in lactation care
- Be able to identify ways to use more inclusive language and culturally appropriate patient care and healthcare promotion



3

What Does it Mean to “Breastfeed”?

- What images come to mind?
- Who is involved?
- Who does it leave out?



NCDHHS, Division of Public Health & Division of Child & Family Well-Being | Inclusive Lactation Support for LGBTQ+ Families | August 18, 2022 4

4

Those Often Left Out

- Fathers
- Other partners
- Exclusive pumpers, bottle feeders
- Donor milk users
- Black, Indigenous, People of Color (BIPOC)
- Other support (family, friends, community)
- Breastfeeding support people
 - Diversity needed in lactation support
- LGBTQ+ people

NCDHHS, Division of Public Health & Division of Child & Family Well-Being | Inclusive Lactation Support for LGBTQ+ Families | August 18, 2022 5

5

Why Talk About This?

"A lack of LGBTQ education [among] health professionals may contribute to negative attitudes or apprehension toward caring for this population and ultimately... lead to persistent mistreatment"



Source: <https://journals.sagepub.com/doi/full/10.1177/2057158519865644>

NCDHHS, Division of Public Health & Division of Child & Family Well-Being | Inclusive Lactation Support for LGBTQ+ Families | August 18, 2022 6

6

Why Talk About This?

- Approximately 4.5% of adults in the U.S. identify as LGBTQ+. That means that there are more than 11.3 million LGBTQ+ adults in the U.S.¹
- 2 million to 3.7 million children under age 18 have an LGBTQ+ parent.¹
- The South is home to more than 500,000 trans people.²
- Over 315,000 people identified as LGBTQ+ in NC in a 2020 survey.³


Sources: (1) <https://www.familyequality.org/resources/facts-about-lgbtq-families/>; (2) <https://illiaminstitute.law.ucla.edu/wp-content/uploads/Trans-Adults-US-Aug-2016.pdf>; (3) <https://chs.aph.ncdhhs.gov/data/facts/2020ncwhspages.htm>

NCDHHS, Division of Public Health & Division of Child & Family Well-Being | Inclusive Lactation Support for LGBTQ+ Families | August 18, 2022 7

7

What Does LGBTQ+ mean?

Lesbian
Gay
Bisexual
Transgender
Queer / **Q**uestioning
+



NCDHHS, Division of Public Health & Division of Child & Family Well-Being | Inclusive Lactation Support for LGBTQ+ Families | August 18, 2022 8

8

Misconceptions about LGBTQ+ Families

1. A person can only breastfeed / chestfeed if they gave birth.
2. LGBTQ+ parents don't want to breast / chestfeed.
3. Only one parent can breast/ chestfeed an infant.
4. Sexual orientation is linked to gender identity.
5. Transgender people can't have biological kids.
6. Breast milk produced through induced lactation is less nutritious.

NCDHHS, Division of Public Health & Division of Child & Family Well-Being | Inclusive Lactation Support for LGBTQ+ Families | August 18, 2022 9

9

Birth and Lactation Vocabulary

Breastmilk / Human Milk / Milk / Mothers Milk

Breastfeeding / Chestfeeding / Nursing / Body Feeding

Pregnant Woman / Pregnant Person / Birthing Person

NCDHHS, Division of Public Health & Division of Child & Family Well-Being | Inclusive Lactation Support for LGBTQ+ Families | August 18, 2022 10

10

Additional Language Considerations

- **Know your audience**
 - Translation to other languages
 - Cultural identity through language
 - Reaching persecuted individuals
 - 2 Spirit
- **Language in research**
 - Cite based on how data was collected
 - Inclusion in design study

<https://usfca.org/amp/affirm-inclusivity/>
www.kfmsd.org/assets/Gender%20Inclusive%20Statement.pdf
www.liebertpub.com/doi/full/10.11999/afm.2021.20189.aie

NCDHHS, Division of Public Health & Division of Child & Family Well-Being | Inclusive Lactation Support for LGBTQ+ Families | August 18, 2022 11

11

Affirming Practices

- **Name**
- **Gender**
- **Pronouns**
- **Sexual orientation**
- **Lactation terms**
- **Parent term**
- **Child term**

What pronouns do you use?
 She / her / hers
 He / him / his
 They / them / theirs

What do you call feeding your baby?
 Breastfeeding
 Chestfeeding
 Nursing
 Etc.

What parent word do you use? What does your child call you / your partner?
 Mom, Mother, Parent, Dad, Daddy, Zaza

NCDHHS, Division of Public Health & Division of Child & Family Well-Being | Inclusive Lactation Support for LGBTQ+ Families | August 18, 2022 12

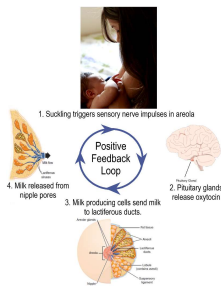
12

Open-ended Questions

- How do you plan to feed the baby?
- What support people will you have?
- How is feeding going?
- Who feeds the baby?
- What does the baby eat?

13

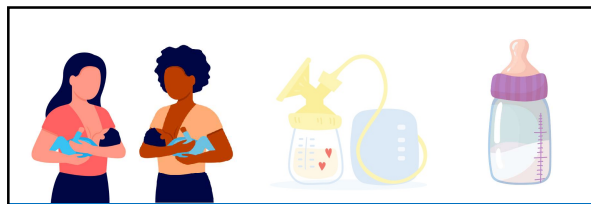
Biology of Lactation



- What exactly is lactation?
- All humans can lactate! * (they just may take different paths or need different assistance)
- Induced Lactation
- Those designated as male at birth
- Those designated as female at birth

Image credit: https://commons.wikimedia.org/wiki/File:Lactation_Positive_Feedback_Loop.png

14



There are Many Ways to Feed a Baby ...

- Co-lactation
- Supplemter devices
- Exclusive pumping
- Chest / breastfeeding / bodyfeeding

15

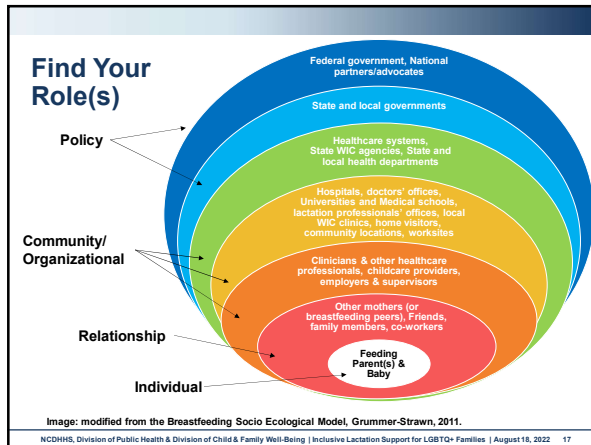
Their Stories

- [RAE D.](#)
- [CASEY \(they/them\)](#)
- [JAYK KEARNS](#)
- [SAM DAYZE \(he/him\)](#)
- [CARTER NICKELL \(they/them\)](#)
- [JOHNNY BLAZES \(they/them\)](#)

<https://www.4thtrimesterbodiesproject.com/mission>

NCDHHS, Division of Public Health & Division of Child & Family Well-Being | Inclusive Lactation Support for LGBTQ+ Families | August 18, 2022 16

16



17

Public Health Lactation Equity Language

- **Inclusive language is essential**
- **Contributes to safe & supportive environments**
- **Ensures programs & services are delivered with respect and meet the needs of those we serve**

<https://www.breastfeedingcontinuityofcare.org/blueprint>

NCDHHS, Division of Public Health & Division of Child & Family Well-Being | Inclusive Lactation Support for LGBTQ+ Families | August 18, 2022 18

18

Patient-centered Care

Using inclusive language is consistent with patient-centered care

Mirror the language/terms used and preferred by your patients

National Association of County and City Health Officials Recommendation: Family-Centered Care, Implicit Bias Awareness & Cultural Humility Approach

Provide family-centered lactation care that is responsive to the intersectionality of families' multiple identities, their social determinants of health, and other factors impacting their infant feeding journey.

<https://www.breastfeedingincontinuityofcare.org/bsupport>
NCDHHS, Division of Public Health & Division of Child & Family Well-Being | Inclusive Lactation Support for LGBTQ+ Families | August 18, 2022 19

19

ASSESS Method

Ask questions in safe, humble manner

Seek self-awareness

Suspend judgement

Express kindness and compassion

Support a safe and welcoming environment

Start where the patient is

<https://www.naccho.org/igbede/downloadable-resources/Cultural-Humility-factsheet-final.pdf>
NCDHHS, Division of Public Health & Division of Child & Family Well-Being | Inclusive Lactation Support for LGBTQ+ Families | August 18, 2022 20

20

Just Try It

"Don't let perfect be the enemy of good." – Voltaire

- Strive to use language that reflects, affirms, and fosters belonging across the wide range of gender expressions of the families you serve AND if you get it wrong, ask how to do it better next time
- Use affirming and inclusive messaging, graphics and images on materials and posters
- Keep learning and listening
- Try again!



NCDHHS, Division of Public Health & Division of Child & Family Well-Being | Inclusive Lactation Support for LGBTQ+ Families | August 18, 2022 21

21

Our Role

- Empower patients to make informed decisions about their own health and the health of their babies
- Support and educate patients to increase breast/chestfeeding initiation rates and continuation
- Normalize gender-inclusive language
- Listen and keep learning!

22

Resources

- www.healthline.com/health/chestfeeding#who-uses-it
- www.ilic.ca/sites/default/files/REVISED-Trans-Nursing_Tip-Sheet.pdf
- www.theatlantic.com/health/archive/2016/08/chestfeeding/497015/
- www.illi.org/breastfeeding-info/transgender-non-binary-parents/
- www.4thtrimesterbodiesproject.com/gallery-1/tag/chestfeeding
- <https://kellymom.com/bf/got-milk/transgender-parents-chestbreastfeeding/>
- www.bfmed.org/assets/DOCUMENTS/PROTOCOLS/Protocol%20%2333%20-%20English%20Translation.pdf
- www.lactationtraining.com/filter?q=allies%20advocates%20and%20activists
- <https://bmcpregnancychildbirth.biomedcentral.com/track/pdf/10.1186/s12884-016-0907-y.pdf>
- www.urmc.rochester.edu/MediaLibraries/URMCMedia/breastfeeding/documents/co-lactation-infant-feeding-plan.pdf
- www.urmc.rochester.edu/breastfeeding/services/lgbtqi-and-breastfeeding.aspx
- www.youtube.com/watch?v=BbdyRYuNkxc&t=52s
- www.liebertpub.com/doi/full/10.1089/bfm.2021.29189.aie
- <https://uslca.org/amplify/reafirm-inclusivity/>
- www.bfmed.org/assets/Gender%20Inclusive%20Statement.pdf
- <https://abm.memberclicks.net/assets/33%20Lactation%20Care%20for%20LGBTQ%20Plus%20Patients.pdf>
- <https://www.hrc.org/resources/glossary-of-terms>
- www.albany.edu/cphce/lactation.shtml

23

You may earn continuing education hours for your professional discipline by completing the evaluation for this activity. Your thoughtful responses provide important information that allows the PHNICE to continue its mission of providing quality professional development opportunities at free or reduced cost.

If you attended the live webinar, you must complete the activity evaluation by September 4, 2022. If you are viewing on demand, you must complete the activity evaluation within the next two weeks of viewing the presentation to receive your professional development certificate. Everyone should save/print a professional development certificate for their records.

A professional development certificate will be provided to all individuals that complete the evaluation by the deadline. Please Note: This will be your only option to receive evidence of the professional development contact hours and/or CPH Recertification Credits. You will need to save this certificate.

To complete the evaluation, go to <https://www.surveymonkey.com/r/0202AB>

24

Questions & Wrap Up

- Thanks for attending
- Further questions or requests: dphbreastfeedingcoordinationteam@dhhs.nc.gov

Learning Objectives

- By the end of this presentation, participants will:
- Examine their own biases about breastfeeding
 - Understand the importance of inclusive language in lactation care
 - Be able to identify ways to use more inclusive language and culturally appropriate patient care and healthcare promotion